

EXCLUSIVE INSIGHTS INTO

Karo Kauer's Smart Dream Home

PAGE 05

Save Up to 50% on
Energy Costs

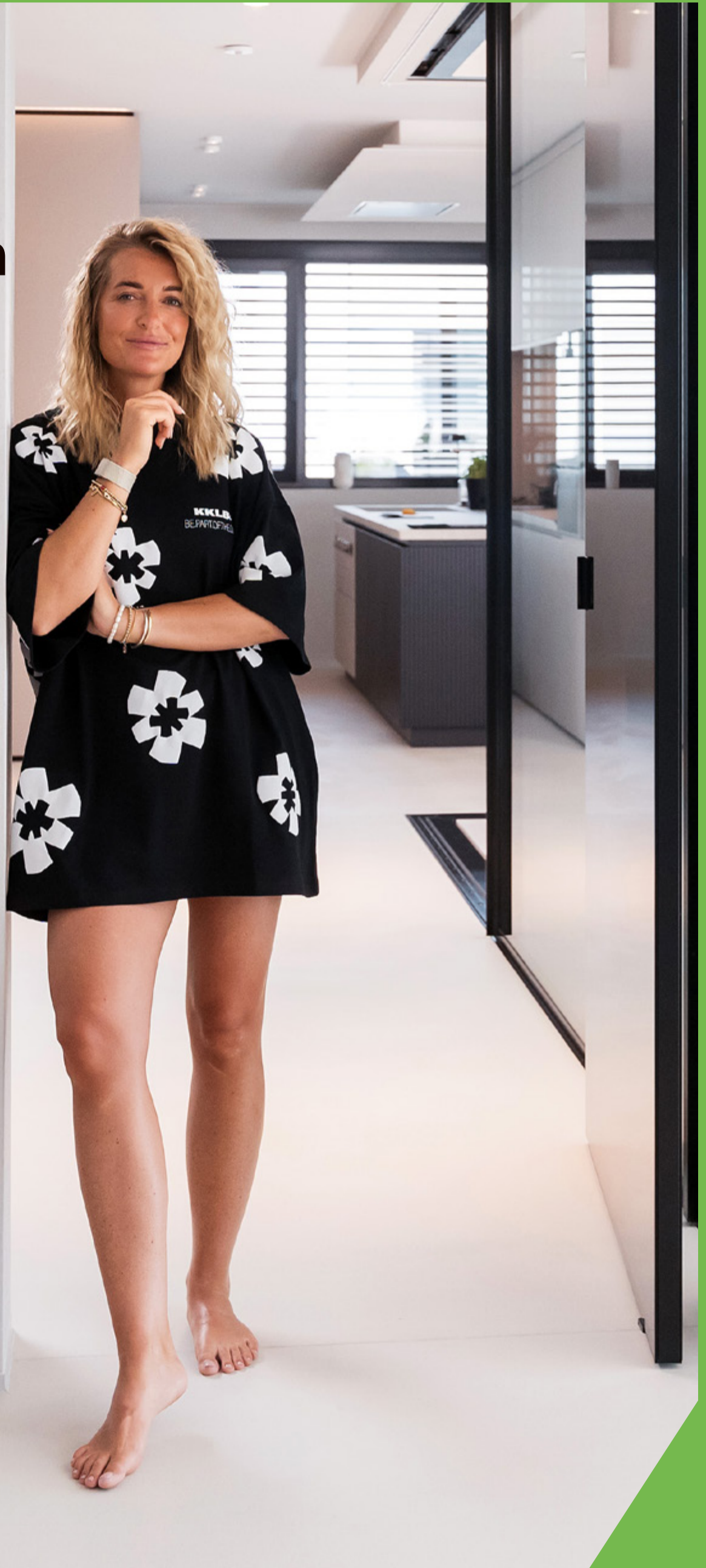
PAGE 02

Retrofitting at
Its Finest

PAGE 06

Loxone Audio:
Beyond Just Music

PAGE 08



No Frills— Real Energy Savings.

Buildings are the biggest energy consumers: They account for a staggering 40% of global energy consumption. With a holistic energy management approach, this immense demand can be reduced by up to 50%. In Germany alone, that would save 100 million tons of CO₂ annually—equivalent to the weight of 1,000 large cruise ships. For comparison, that's more than 2.5 times the weight of the entire global cruise fleet.

Across the EU, 75% of greenhouse gas emissions come from energy production and consumption. Buildings are the largest consumers, responsible for around 30% of CO₂ emissions. That's why improving their energy efficiency is a key pillar of the energy transition.

The European Green Deal sets ambitious targets: reducing net greenhouse gas emissions by at least 55% by 2033 (compared to 1990 levels) and reaching net zero by 2050. A major focus? Boosting the energy efficiency of buildings.

Loxone is the only holistic system in the world capable of making a real impact—cutting energy consumption by up to 50% while maximizing efficiency.

With our Energy Manager, we offer the most advanced energy management system on the market. Backed by continuous innovation, we are redefining what's possible in energy optimization.



Loxone App: Complete control of your energy management in the palm of your hand.

» Climate change and environmental degradation are existential threats to Europe and the world.«

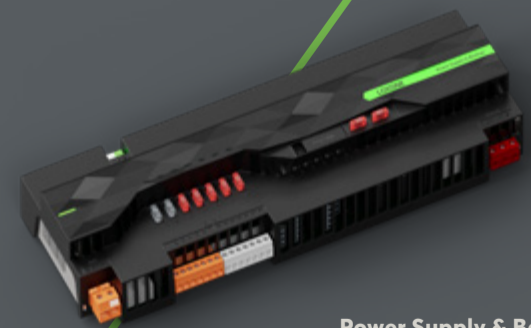
— EU Commission

Loxone Wallbox: True dynamic surplus charging via plug & play.



Belimo Air & Tree: Intelligent, energy-efficient control for HVAC systems.

Touch Pure CO₂: Demand-based ventilation control for optimal air quality.



Power Supply & Backup: Reliable power supply for all your Loxone devices.



▶ Watch Video

Learn more on energy management

Loxone Energy Management in Action

Loxone ensures greater energy efficiency in many thousands of buildings worldwide. Scan the QR code to find out more about our reference projects.

50 %

lower heating costs

Achieved with just a few wireless components in this Swiss retrofit project.

1,46 MW

Instead of 4.38 MW

The Mandarin Oriental in Prague reduces the massive energy consumption for audio by 66%.

0 €

heating costs

The passive house »Eisenstraße« is a real eye-catcher – and produces more energy than it consumes.

90 %

energy self-sufficiency

A detached home achieves near-total independence with smart energy management and PV integration.

1

Miniserver

You can implement comprehensive energy management with just one Miniserver.

58 %

less energy use

A single-family home in Bavaria slashed its energy consumption by more than half.

Facts & Figures

40% of the EU's energy consumption is used to operate buildings.

71% of the energy consumption in a family home is required for heating.

100 Mio. t CO₂ could be saved in Germany through home and building automation.

75% of the EU's CO₂ emissions are due to the generation and consumption of energy.

€1,500 – that's how much could be saved of a family home's energy costs with Loxone.





Watch Video

Check out the YouTube Channel



News, trends and innovationen – compact and smart

NEW: Loxone Flash

Get the latest Loxone updates—fresh, concise, and inspiring every month. With Loxone Flash, we bring you the most exciting news in smart home and building automation directly to your screen. From groundbreaking product updates and inspiring case studies to exclusive insights into the world of Loxone, you'll be up to date in just a few minutes.

Why tune in? Loxone Flash isn't just informative—it's also fun! Discover tips, trends, and tricks to make your home or business even smarter. Whether you're

already a Loxone fan or just curious about intelligent solutions, there's something for everyone.

By the way: Our YouTube channel features all episodes of Loxone Flash, plus a wide range of informative and exciting videos about home and building automation. Subscribe now so you never miss an update!



Go to Loxone Planner

The Loxone Planner

Your Smart Home, Perfectly Planned

Planning a smart home has never been easier. With the Loxone Planner, you can design your project from start to finish—whether you're planning a single room or the entire house.

This intuitive tool guides you step by step through the planning process, showing you the impressive features you can add to your Loxone Smart Home and which components will bring your vision to life. You'll get a clear overview of everything that makes your home smart—from A for audio to Z for zoned heating.

For beginners, the Planner's simple mode is perfect for visualizing your first ideas. Loxone partners also have access to an advanced mode for more detailed settings and precise project planning.

With just a few clicks, you can lay the groundwork for your smart home—and it's all incredibly easy. Try it out and see how simple planning with Loxone can be!

Festive lighting at night?

Intelligent Lighting When You Need It Most

We've all been there: it's the middle of the night, and you have a choice: blast your way through the dark with blinding lights or fumble around, risking stubbed toes and bruises. Neither is ideal, but we have the perfect solution—the **Good Night Function**.

Comfort, safety, and peace of mind are especially important at night. A calming light before bed helps you wind down and fall asleep. And when you need to get up, softly dimmed lights guide your way—no more stumbling, just smooth and safe navigation through the dark.



»I'm really not a tech nerd at all, but this is so easy to use!«
 Karo Kauer, Entrepreneur,
 Karo Kauer Label

Exclusive insights

Karo Kauer's Smart Dream Home

Few people get such a private look inside: Influencer and entrepreneur Karo Kauer has transformed her dream home with cutting-edge smart home technology from Loxone. In an exclusive home tour, she gives us a behind-the-scenes look at her personal retreat and shares the benefits of her fully connected home.

For Karo, two things were top priorities: comfort and security. With the Loxone App, she has full control at all times—whether it's checking if a window is open or seeing who's at the door. As someone who's constantly on the go, she finds this especially useful.

One of the biggest highlights? Her dressing room—it's every fashion lover's dream come true. Smart lighting showcases her shoe collection perfectly, making every pair a showstopper.

For cozy movie nights, Karo has set up her own »cinema mode«: the lights dim, the music turns off, and the shades lower—all automatically.

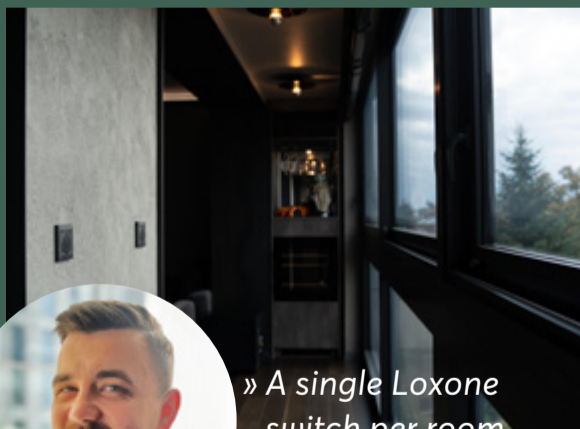
Loxone also shines outside: From ambient lighting around the pool for unforgettable parties to the perfect music setup for a relaxed evening with a glass of wine, her outdoor spaces are just as smart as the rest of her home.





Retrofitting at Its Finest

With sustainability becoming a top priority, more and more building owners are choosing to modernize existing properties rather than build from scratch. This not only conserves valuable resources but also significantly reduces CO₂ emissions. Thanks to Loxone Air wireless technology, homes and commercial buildings can be upgraded quickly, efficiently, and with minimal effort—as this stunning apartment proves.



» A single Loxone switch per room controls the music, lighting, and shading.«

Michał Kraczka, ControlMe,
Loxone Gold Partner

The owner had a clear vision: a modern industrial-style apartment with cutting-edge technology. Late in the construction process, he realized he wanted to make his dream home fully smart. Fortunately, with the help of a certified Loxone Partner, the entire apartment was retrofitted 100% wirelessly. This flexible setup allows for future expansions with ease.

Perfectly Integrated Into the Design

The elegant design of the Loxone Touch Pure Air blends in perfectly with the industrial style of this apartment. The dimmable LED strips create indirect light to emphasize the special character and set accents. The shading has also been automated in combination with the lighting and works

depending on presence and temperature. The integrated humidity and temperature sensors of the Touch Pure Air, in conjunction with the heating and air conditioning, help to maintain the optimum temperature. The access system for this apartment was also implemented with the Loxone NFC Code Touch and an electronic lock.

This interaction of all components simultaneously optimizes the consumption of expensive operating resources, helps to save energy and thus keep costs low. The owner also benefits from greater convenience and safety in everyday life.

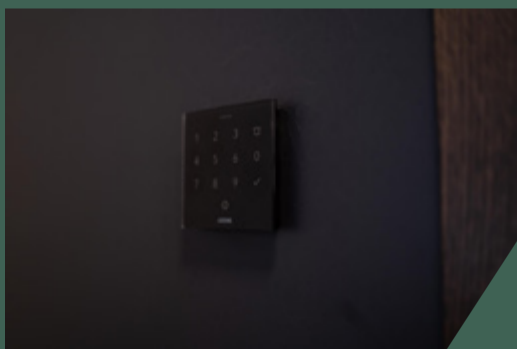
Loxone Air – Built for Stability & Performance

Von der Deckenbeleuchtung bis zur Wallbox. Nahezu alle Loxone Produkte sind auch in einer Air-Variante erhältlich und so perfekt für Nachrüst- und Umbauprojekte aller Art geeignet.

From Ceiling Lights to wallboxes, nearly all Loxone products come in an Air version, making them perfect for retrofits and renovations. Unlike standard wireless technologies, Loxone Air was designed exclusively for smart buildings, offering unique advantages. Thanks to the specially developed chips, all Loxone Air products have very low energy consumption.

In addition, every Air device permanently connected to the power supply increases the range and stability of the installation. This means that thick walls or long distances are no longer a problem. Every corner of the building has a stable network.

What's more, thanks to Loxone's flexibility, the wired Tree variant and Air technology can be combined without any problems. Loxone Air technology is also a popular addition in new buildings, e.g. for switching sockets, water sensors and smoke detectors.



Renovation made simple.

With Loxone Air, upgrading an existing home or commercial property has never been easier. Transform any space into an intelligent building—without the hassle.



Watch Video

Learn more about this project

YouTube: Retrofit any type of home smartly with Loxone Air

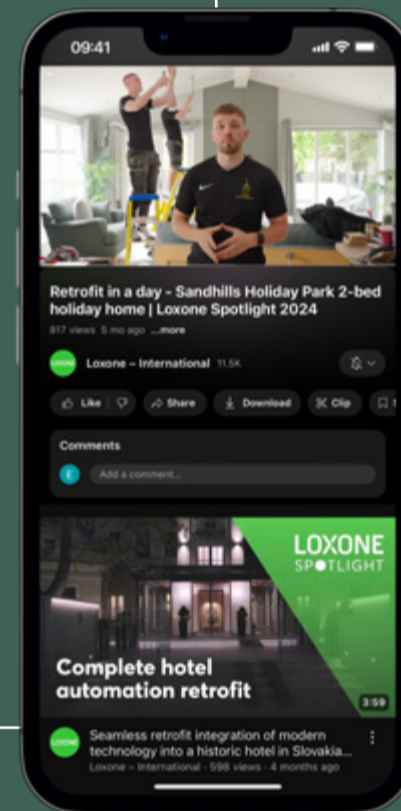
In this episode of Loxone Spotlight, a 2-room vacation home is transformed into a fully smart space—easily and in just one day! Looking for inspiration for your own home? This is your chance to see how effortlessly Loxone can upgrade any space.

Don't miss it!



Watch Video

Watch the video on YouTube.



Beyond Just Music

Comfort, energy efficiency, and security are key to modern living—but true smart living goes beyond lighting and heating. Audio is an essential part of the smart home experience.



Watch Video

Learn more
about Audio





But if you think audio is just about music, you're missing out! With Loxone Audio, your home becomes a sound paradise, tailored to your custom needs.

SMART AUDIO, ALL DAY LONG

Morning

Wake up to your favorite playlist. In the bathroom, your presence detector starts your go-to radio station. In the kitchen, a text-to-speech message tells you: No umbrella needed today!

Leaving home

Your smart home reminds you that a window is still open—so you can close it before heading out stress-free.

Evening

After a long day at work, your favorite song welcomes you home. Later, as you watch a movie, the doorbell rings—only in the living room so the kids stay asleep. A seamless, stress-free end to your day.

Sounds good? With Loxone, your audio system becomes an all-rounder: as an alarm clock, doorbell, for text-to-speech messages, announcements, alarms - and of course for music.

CRYSTAL-CLEAR SOUND, ZERO CLUTTER

The days of bulky amplifiers, large speakers and endless cables in the living room are over - trade magazines such as Heise Online have long since agreed on this in numerous articles. Today, smart integration, aesthetics and functionality are what count. And Loxone is setting the standard:

Aesthetics without compromise

Our speakers are discreetly concealed in furniture or the ceiling - no more bulky devices.

No chaos

Thanks to master/client technology, you need 80% fewer cables.

Fully integrated

With Loxone, your audio system is seamlessly integrated into your smart home.

With Loxone Audio, you can enjoy brilliant sound, smart technology and flexibility - without compromise. Our unobtrusive built-in speakers provide maximum sound without taking up valuable space.



The smartest home & building automation

Everything From a Single Source

From A for Audio to Z for Zoned Heating Control, the Miniserver handles a wide range of tasks, prioritizing security, convenience, and energy efficiency. Its highly flexible and scalable design ensures it can be tailored to meet the unique requirements of any project.

Scalable Access Control
From single apartments to global chain.

Revolutionary Audio Solution
Seamlessly integrated, delivering brilliant sound and infinite scalability.

Atmospheric Lighting
Presence-controlled light scenes for any application.

All-Encompassing Energy Management
Monitor. Optimize. Save.

Comprehensive Security⁴
Protection against burglary, fire, water damage, and data breaches.

Intelligent Shading
Achieve the perfect room climate while ensuring privacy and storm protection.

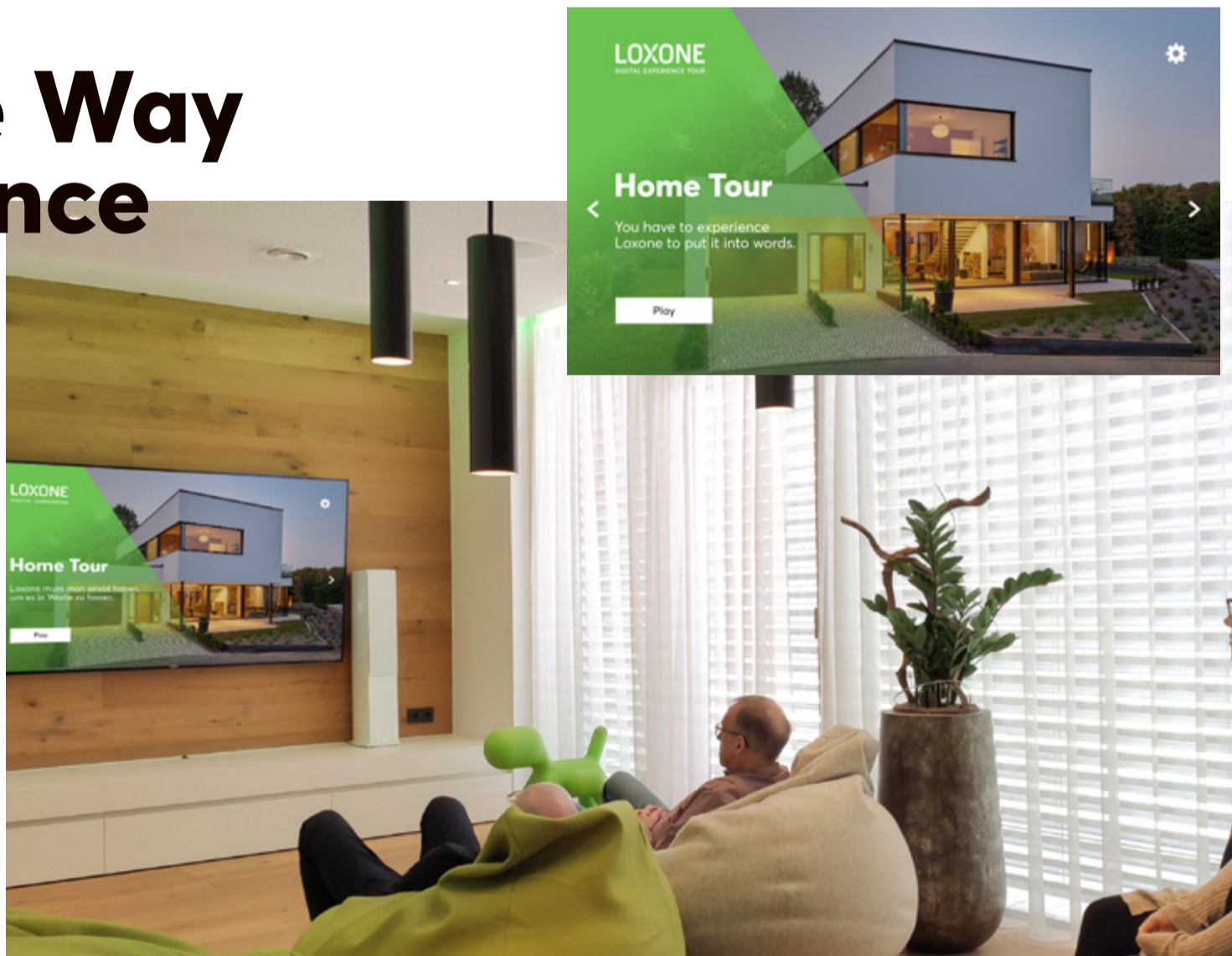
Efficient Indoor Climate
Harmonized control of heating, cooling, ventilation, and shading.

Digital Experience Tour

The most Innovative Way to Experience Loxone.

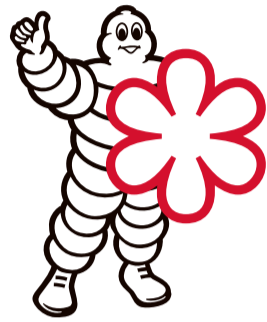
The Loxone Digital Experience Tour combines the real world with the digital world in the most innovative way. The virtual tour influences the room you are in and controls lighting, shading, music and much more. In this way, you can get to know numerous features of an intelligent building in just a few minutes.

Experience Loxone up close with the Digital Experience Tour – at a Loxone Partner or a Loxone branch near you.





Smart Restaurant: TROYKA



»Troyka« means »trio« and refers to the trio of operators around the two star chefs Alexander Wulf and Marcel Kokot as well as sommelier Ronny Schreiber. Many processes are automated in their restaurant, which opened in 2021. This not only saves the trio time, but also money.

The Michelin Guide calls it a very special culinary experience offered by the chef duo Alexander Wulf and Marcel Kokot. Very modern and rich in flavor. The dishes are accompanied by a young, expert team led by sommelier Ronny Schreiber, a true wine connoisseur who likes to surprise guests with unusual wine recommendations.

Many processes are automated in the background so that the team can concentrate fully on offering its guests a unique dining experience. A good example of this is the »guest operation« mode.

The TROYKA has over 180 lighting circuits in the interior alone, all of which can be dimmed and some of which can also be color-adjusted. If all these lighting circuits had to be operated manually every evening, it would be very time-consuming. Thanks to Loxone, a simple tap in the app is all it takes for all 180 lighting circuits to change to a previously defined lighting scene.

The operating mode not only affects the lighting, an announcement is also made to inform the team that the restaurant is about to open, the music adjusts its volume and playlist to the »guest mode«, the ventilation system is activated and much more.



» After the opening, it becomes more than clear what added value automation offers us. As managing directors, we can devote ourselves fully to our work and don't have to worry about the lighting, shading and much more in the building! « –

Ronny Schreiber, Sommelier & Managing Director

smart times BUSINESS
LOXDNE

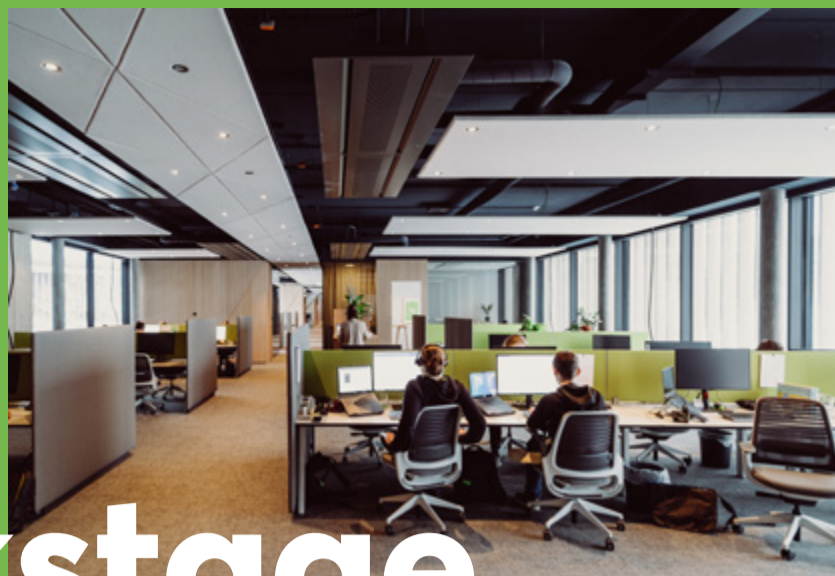
INTELLIGENT BUILDING AUTOMATION

More Comfort, Security & Efficiency for Your Business

Smart Times for Business Owners

Are you a business owner? Our special edition Smart Times Business shows you on 16 pages how intelligent building automation can make your commercial project more efficient, safer and more convenient.

Discover Smart Times Business



Loxone Backstage

Founded in Austria in 2009 by Martin Öller and Thomas Moser, we are now the market leader for intelligent automation solutions. Every fourth new building in Austria is equipped with Loxone. But what is actually behind »Loxone«?

Loxone enables simple control and intelligent automation of all kinds of projects. Whether smart home, hotel, restaurant, commercial property or special application.

In addition to our own products, countless third-party providers can also be integrated into your Loxone building automation system thanks to numerous open interfaces.

Around 300,000 projects in more than 100 countries have already been realized by our professional partner network. From the classic smart home to the Madarin Oriental in Prague and the national stadium in Norway to street lighting in Amsterdam. More than 1,000 employees at 45 locations worldwide work every day to make life and work a little more comfortable, safer and more energy-efficient.

Quality Made in Europe

We design our products with passion and attention to detail. And right in the heart of Europe. All of our hardware and software is developed at our sites in Austria. In Wäschenbeuren near Stuttgart, we have one of the most modern production facilities in Europe.

Everything From a Single Source

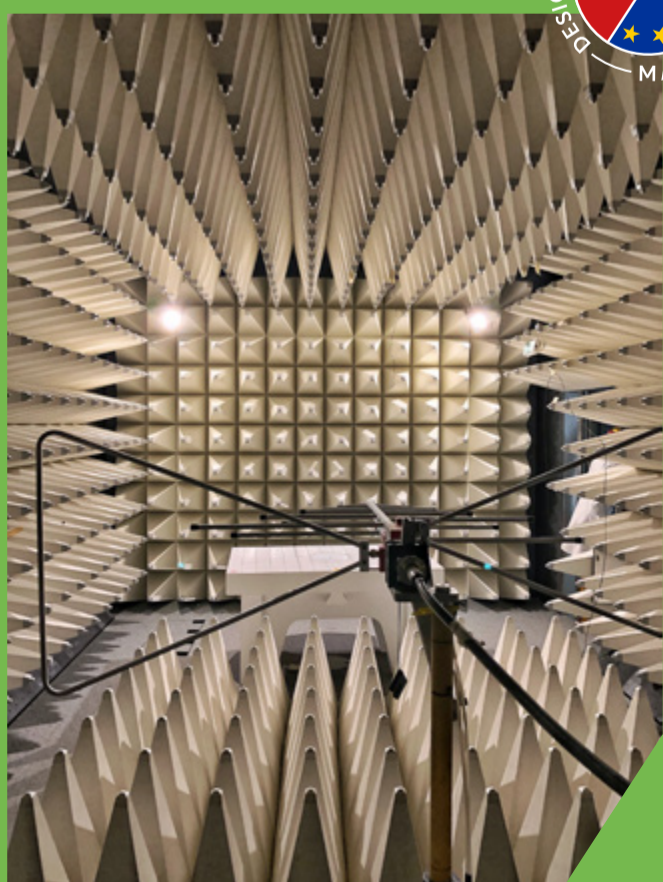
Lighting, shading, climate, energy, access, audio, security and much more – Loxone connects all components in the intelligent building, similar to the human nervous system. All strands run together to the central control system, the miniserver. It allows the individual components and devices to talk to each other.

For our products, high-quality materials, simple installation by the Loxone partner and intuitive operation by the user are equally important to us.

Strong cooperations

In order to be able to offer intelligent automation solutions for every application, we work with strong cooperation partners for everything that we do not manufacture ourselves. From Miele to Bosch-Siemens and Vaillant – numerous well-known manufacturers can be seamlessly integrated into your Loxone system.

We pursue a very holistic approach, with a wide-ranging product portfolio of hardware and software developed in-house. Our claim: All products and functions are perfectly coordinated. Only in this way can the full potential of modern home and building automation unfold.



» It's about the good feeling when the home & building automation system performs numerous tasks for me every day.« –

Thomas Moser & Martin Öller, Founder Loxone